



Decorative & Industrial Painting



Protective Coatings



Heat Reflective Roof Coatings



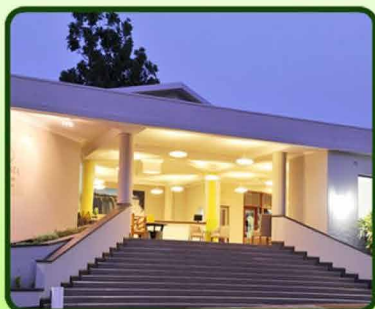
Tank Lining Systems



Abrasive Blasting



Scaffolding



No. 3 Armadale Road, Borrowdale, Harare

Tel: 0242 334994 / 302722, Cell: 0772 127 321/2, email: info@bkpainters.co.zw | www.bkpainters.co.zw

Company Overview

BK Painters & Decorators, a family oriented business, was founded in 1980. It has run successfully for over 35 years with branches throughout Zimbabwe. BK Painters are known for their professionalism, offering guaranteed quality and service and ensuring a personal touch.





Vision

BK Painters aims to be an exemplary employer in all matters relating to the health, safety and welfare of both its employees and anyone else who may be affected by its activities. We aim to minimize our impact on the environment through pollution prevention, reduction of natural resource consumption and emissions, and the reduction and recycling of waste.

Mission Statement

BK Painters will achieve this by providing high quality training, comprehensive workplace evaluation, emergency response, hazardous materials management from acquisition to disposal, and by managing regulatory information.

Our Services

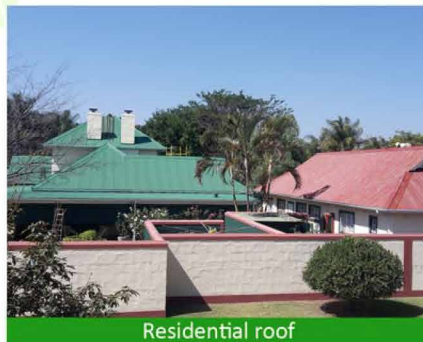
-  Decorative & Industrial Painting
-  Protective Coatings
-  Heat Reflective Roof Coatings
-  Tank Lining Systems
-  Abrasive Blasting
-  Scaffolding

Decorative Painting

We have over the years painted numerous homes, hotels, breweries, lodges, banks, churches, hospitals etc. and, these clients have reciprocated many times. Herewith a few selected properties we have completed:



Matetsi Lodge



Residential roof



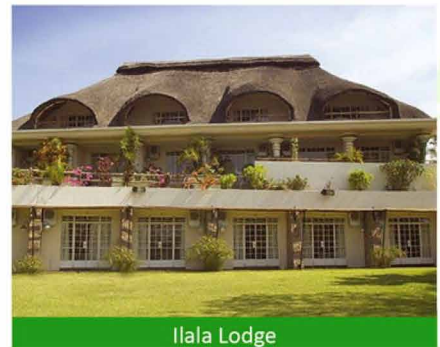
Residential home



Sprayview Hotel



Elephant Hills



Ilala Lodge

- 🔧 **Zim Suns** - Elephant Hills, Kingdom Hotel, Victoria Falls Hotel, Holiday Inn Byo, Carribea Bay, Trout Beck, Monomotapa Crowne Plaza
- 🔧 **Lonrho Zimbabwe**- Leopard Rock
- 🔧 **Glynns Group** - Victoria Falls Safari Lodge
- 🔧 **Rainbow Group** - Victoria Falls Rainbow Hotel, A'Zambezi Lodge
- 🔧 **Embassies** - Canadian Embassy, British Embassy, Swiss Embassy, US Embassy
- 🔧 **Delta Corporation**- Breweries
- 🔧 **Schools** - Hellenic, Arundel, Peter House, Convent School, Christian Brothers College

We have dealt with numerous prestigious architects, who have always been happy to recommend our team of painters to their clients and building contractors. BK have been fortunate enough to be involved in projects with building contractors like

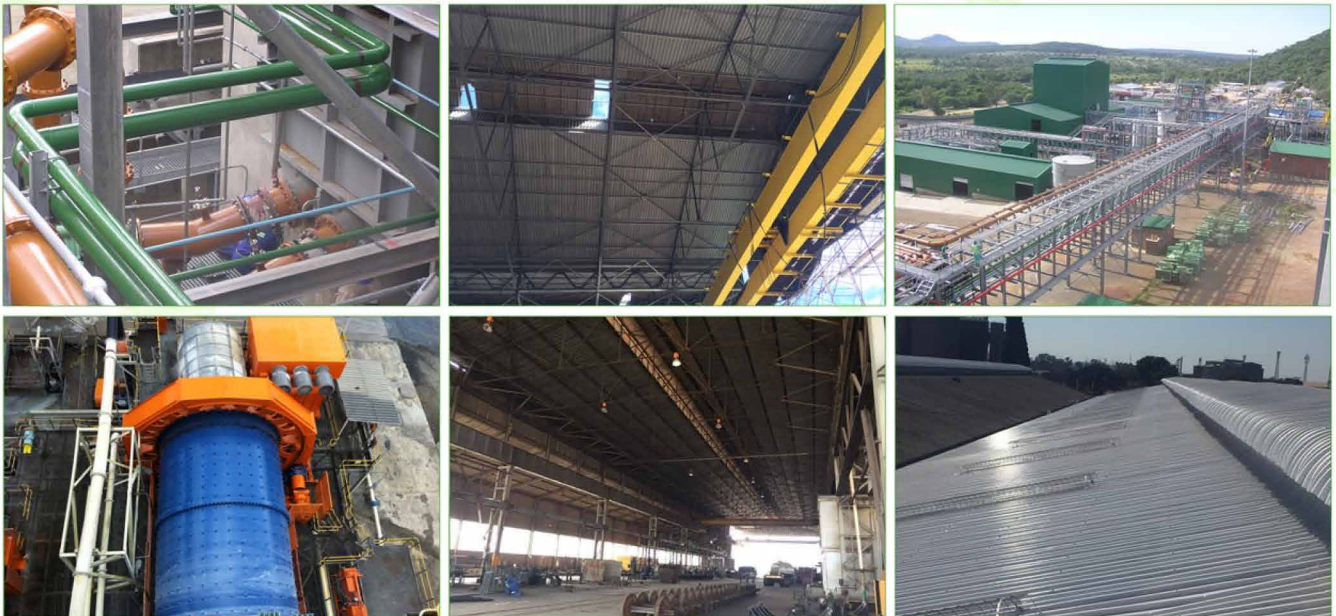
- 🔧 **Gardini & Sons**
- 🔧 **Kiggen Construction**
- 🔧 **Rio Douro**
- 🔧 **Kalamain Investments**
- 🔧 **Lues Construction**

Industrial Painting & Protective Coatings

As this company has numerous fields to diversify in, apart from domestic and commercial properties we also offer outstanding expertise to the protective coating industry.

In the mining field, we have painted various office blocks, staff quarters, machinery, plant and equipment.

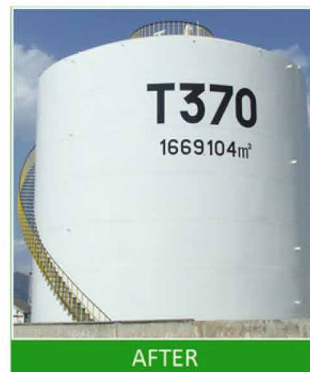
All painters are trained and certified to operate at heights, hazard identification, risk assessment, SHE Induction etc.



-  **Zimplats**
-  **Bindura Mine**
-  **Zisco Steel**
-  **Mimosa Mine**
-  **Fedorah Investments**
-  **Sandvik**

Protective Coatings

BK Painters are skilled and professional paint applicators in Zimbabwe and all workers have been trained by South African manufacturer and have the backup both South African and Zimbabwe manufacturers as their preferred paint applicators. The backup comes with guarantees for up to 10- 15 years from both manufacturer and BK, thus comforting the client concerns of quality and workmanship. BK has the resources and trained staff to handle large turn key projects following strict standards (NACE, SSPC, St and SA). The corrosion protection perform well in aggressive areas such as Immersion service in the petrochemical, Water and wastewater, Pulp and paper, Railcar industries, Exposed steel structures and tanks, food Industry



BK has covered numerous projects, see below to name a few:



Total Zimbabwe



Anglo American - Unki Mine



Selous



Zvishavani Mines



Mashava Mines,



Turk Mine

Radiant Heat Barrier Roof Coating

Cost Saving

- Reduces internal air temperature by up to 40%
- Cuts energy consumption
- Extends roofing life and reduces replacement periods

Environment Friendly

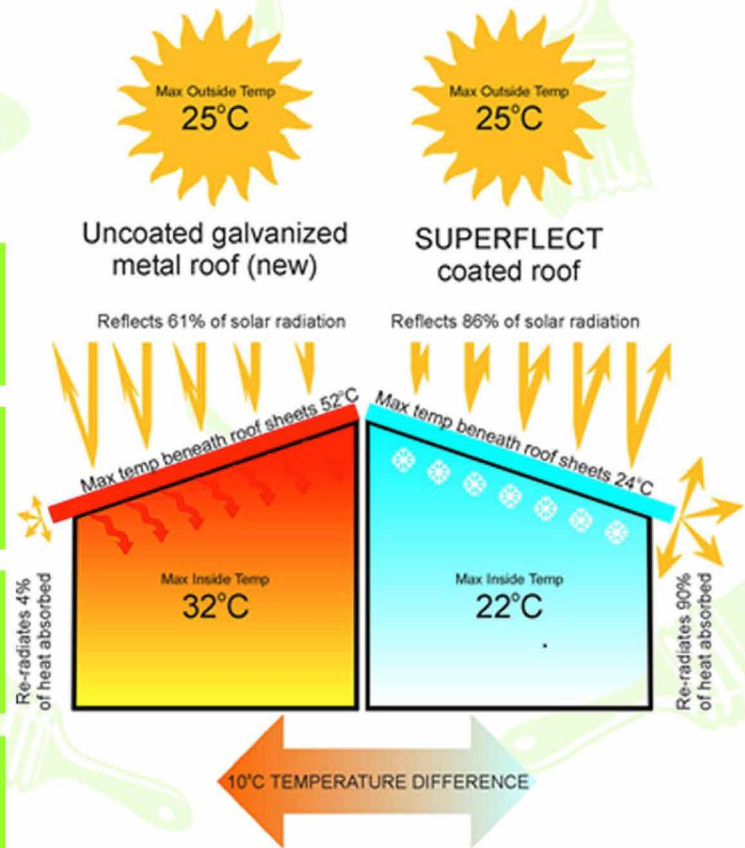
- Reduces energy consumption, helps curb greenhouse effect

Lower Maintenance

- Extended maintenance intervals and longer life of the roof components

Guaranteed

- 10-year Guarantee



These two diagrams show a typical scenario for a painted and a plain galvanized roof on an average day in Johannesburg with a max temperature of 25°C between October and March.

These figures are based on actual, independent tests



Tank Lining Systems

Cementitious Repairs and Polyurea Coating System

Polyurea elastomeric membrane for the waterproofing and protection of concrete, steel and other surfaces. Specially formulated to protect against chemical attacks and in situations of high humidity, it is normally used to protect concrete and steel pipelines on waste treatment water plants, residual water conduits, retention basins, water treatment digesters, outer and lower parts of concrete tanks, silos, floors and terraces, and the interior of tunnels.

It provides an alternative and cost effective solution to providing repairs to concrete and steel tank structures rather than replacing the structure.

Advantages

- 🔧 Cost saving on repairing and coating existing structures rather than replacing
- 🔧 Guaranteed for up to 10 years at 2 mm thickness for tank linings
- 🔧 Polyurea elastomeric membrane intended for the protection of steel and concrete surfaces in chemically aggressive environments.
- 🔧 Continuous coating of high flexibility, does not require joint treatment.
- 🔧 Resistant to water and a wide variety of chemical products.
- 🔧 Quick drying and resistant to a wide range of temperatures.






Tank stratification coating

BK offers a product and method for carrying out tank lining systems that help with a solution for corroded or leaking steel tanks that might be underground or exposed without replacing the structure. This is a big advantage as replacement and downtime linked is costly and therefore BK has a solution to fix corroded or leaking underground fuel tanks at service station or mines, eliminating downtime and therefore cash loss. Some areas which the lining system covers

-  Fuel Depot Storage Tanks
-  Underground Tanks at service stations
-  Mining storage tanks
-  Water storage tanks

A solvent free glass fibre epoxy phenolic reinforced laminate for severely corroded petroleum storage tanks is used. This tank lining system ranges from a finished wall thickness of 2- 6mm which not only reinforces the structural integrity but more importantly provides a corrosive protective tank lining system that is guaranteed for up to 15 years. This way even if the external steel surface corrodes the internal lining stays sound protecting any product inside the tank uncontaminated.

-  Total Zimbabwe Stratification of Service Station Underground Tanks
-  Total Malawi Stratification of Service Station Underground Tanks
-  Storage Water Steel Tanks- repaired leaks

Cleaning and Degassing of Tanks



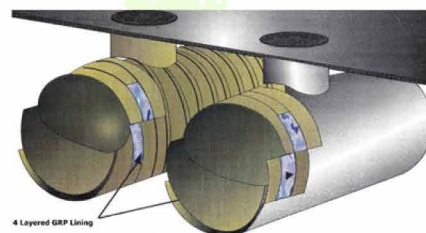
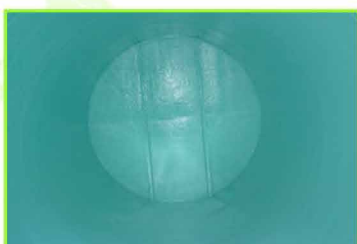
Grinding & Sand Blasting



Tank Blasting



Stratification/ Tank Lining



Abrasive Blasting

BK Painters have trained all blast operators with a South African company and are competent to take on any sand blasting job to International Standard ISO 8501-01 : 1988 (NACE, SSPC, St and Sa).

We offer a mobile blasting service which accommodates clients' needs to blast at any location that suit the client. Our mobile unit has the capability of blasting large turn key projects armed with our own compressor to limit the costs.



BEFORE BLASTING



AFTER BLASTING



SAND BLASTING

Scaffolding

BK Painters workers have been trained and certified by highly qualified instructors to erect scaffolding. We have a crew that has taken on major contracts that have been awarded to our painting contracting division thus all scaffolding supply and erection was done internally reducing the cost to the client.



